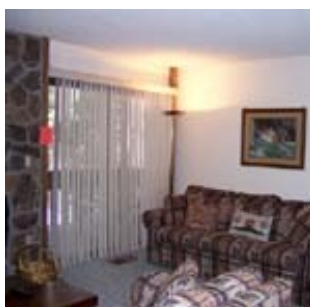




### Silverado I, S203B

This corner unit has three decks with sliding glass doors in each bedroom! There is a queen in the master bedroom, two twin beds in the second bedroom and a queen sofa sleeper in the living area. A nice dining area, fully equipped kitchen and a gas fireplace will make you feel comfortable. There is coin operated laundry in the building and a large indoor hot tub for the building.

**Summer Rates:** \$100-\$135  
**Winter Rates:** \$130-\$310  
**Bedrooms:** Two  
**Sleeps:** Six  
**Proximity to Slopes:** Shuttle Access  
**Location:** Winter Park town  
**Price Level:** \$



**Amenities:**  
 &#149 TV/VCR/DVD/CD  
 &#149 Gas Fireplace  
 &#149 Suburban View  
 &#149 825 Square feet

Beaver Village Resort, 79303 US Highway 40, PO Box 43, Winter Park, CO 80482, (800) 666-0281  
 p: (970) 726-5741, f: (970) 726-5982, [info@beavervillage.com](mailto:info@beavervillage.com)